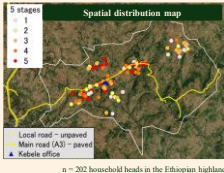


# Adoption-stage progression in forage planting: summary of results



1) Notable rise at transition point

Only for significant variables in monotonic trends.

2) Significance ( $p$ -values) in Structural Equation Modelling (SEM)

- < 5%
- < 10%
- Non-significant

3) Significance ( $p$ -values) in Spatial Autoregressive Ordered Probit (SAROP)

- < 1%
- < 5%
- < 10%
- Non-significant

